



**WHITESTONE**  
solar farm

# WHITESTONE SOLAR FARM

## Volume 6: Environmental Statement

### 6.19 Chapter 17: Figures

Application Document ref. EN0110020/APP/6.19

Revision 01

June 2026

**Planning Act (2008)**  
Infrastructure Planning (Applications: Prescribed  
Forms and Procedure)  
Regulations 2009  
Regulations 5(2)(a)

[whitstonesolarfarm.co.uk](http://whitstonesolarfarm.co.uk)

## CHAPTER 17: FIGURES

---

Document status					
Version	Purpose of document	Authored by	Reviewed by	Approved by	Review date
Rev01	DCO Submission	ERM	DWD, TLT, Whitestone Net Zero Ltd	Whitestone Net Zero Ltd	1 June 2026

Approval for issue		
Whitestone Net Zero Ltd		1 June 2026

The following report and supporting infographics have been produced by human authors. Artificial Intelligence (AI) has not been used to create or alter the technical meaning of these materials. ERM is technology-enabled and may use technology including AI in service delivery, in compliance with all laws applicable to it. Where AI has been used as an administrative support function, this has been appropriately validated by human authors.

ERM take full ownership and responsibility for the report, notwithstanding that ancillary technology (including AI tools) may have been used in service provision.

---

**Prepared by:**

**ERM**

**Prepared for:**

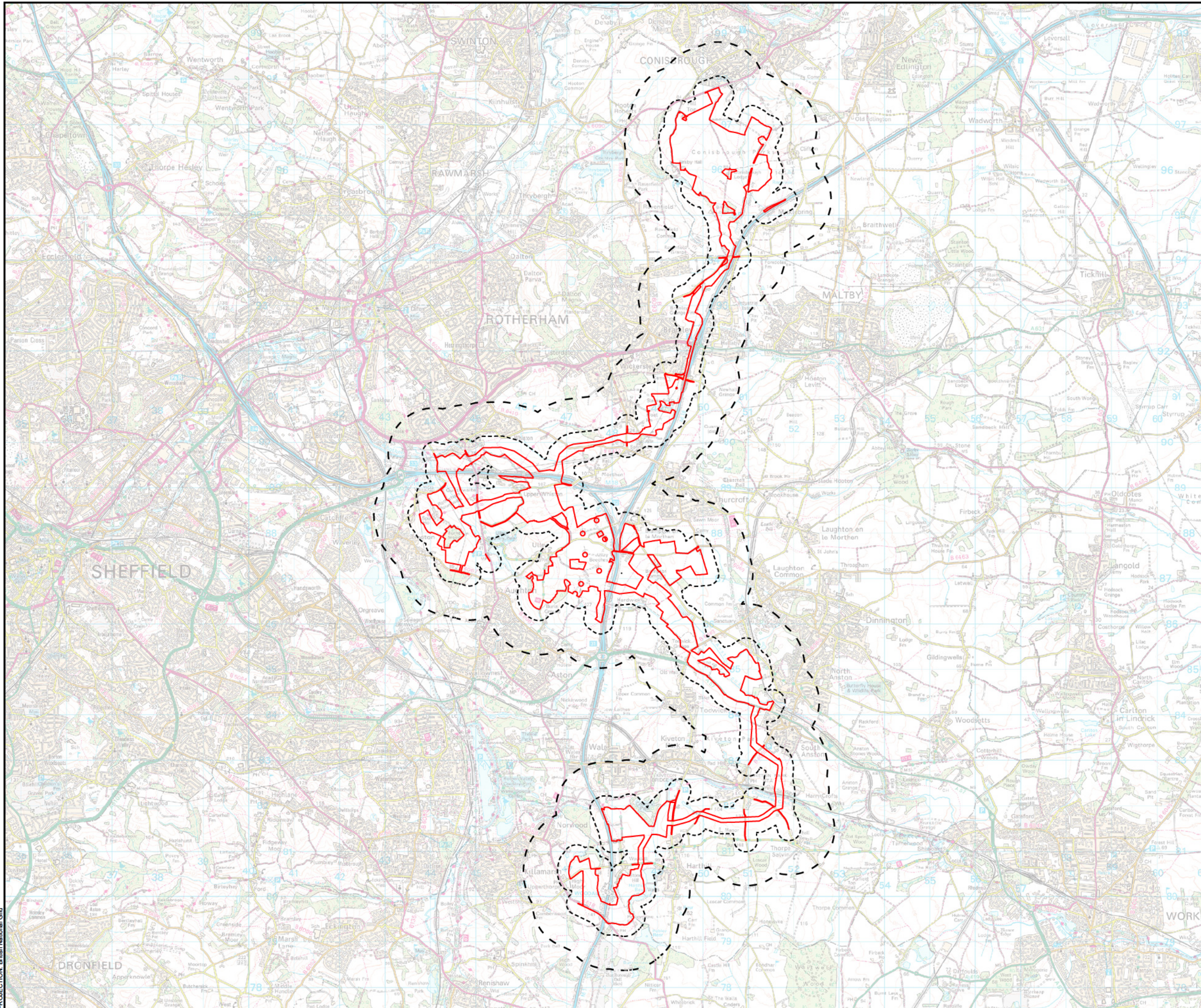
**Whitestone Net Zero Ltd.**

---

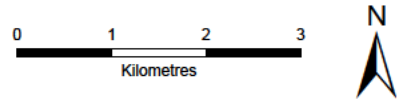
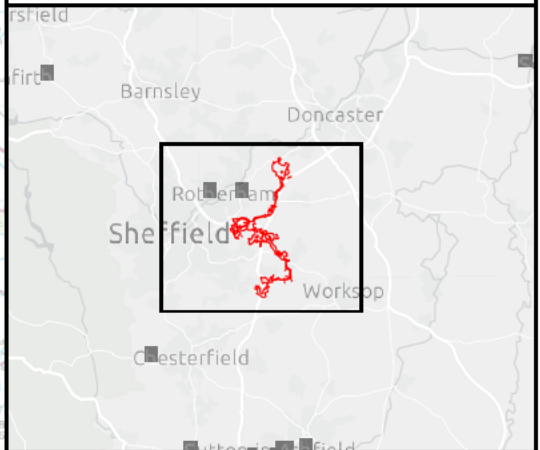
## Contents

Figure Number	Figure Title
17.1	Long List of Cumulative Developments
17.2	Cumulative Effects Assessment – Zones of Influence within 1 km
17.3	Cumulative Effects Assessment – Zones of Influence within 10 km





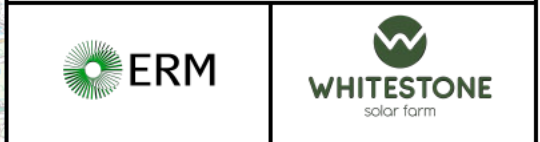
- Order Limits
- Zone of Influence
- 250 m - Air Quality and Ground Conditions
- 1 km - Water Resources and Glint and Glare



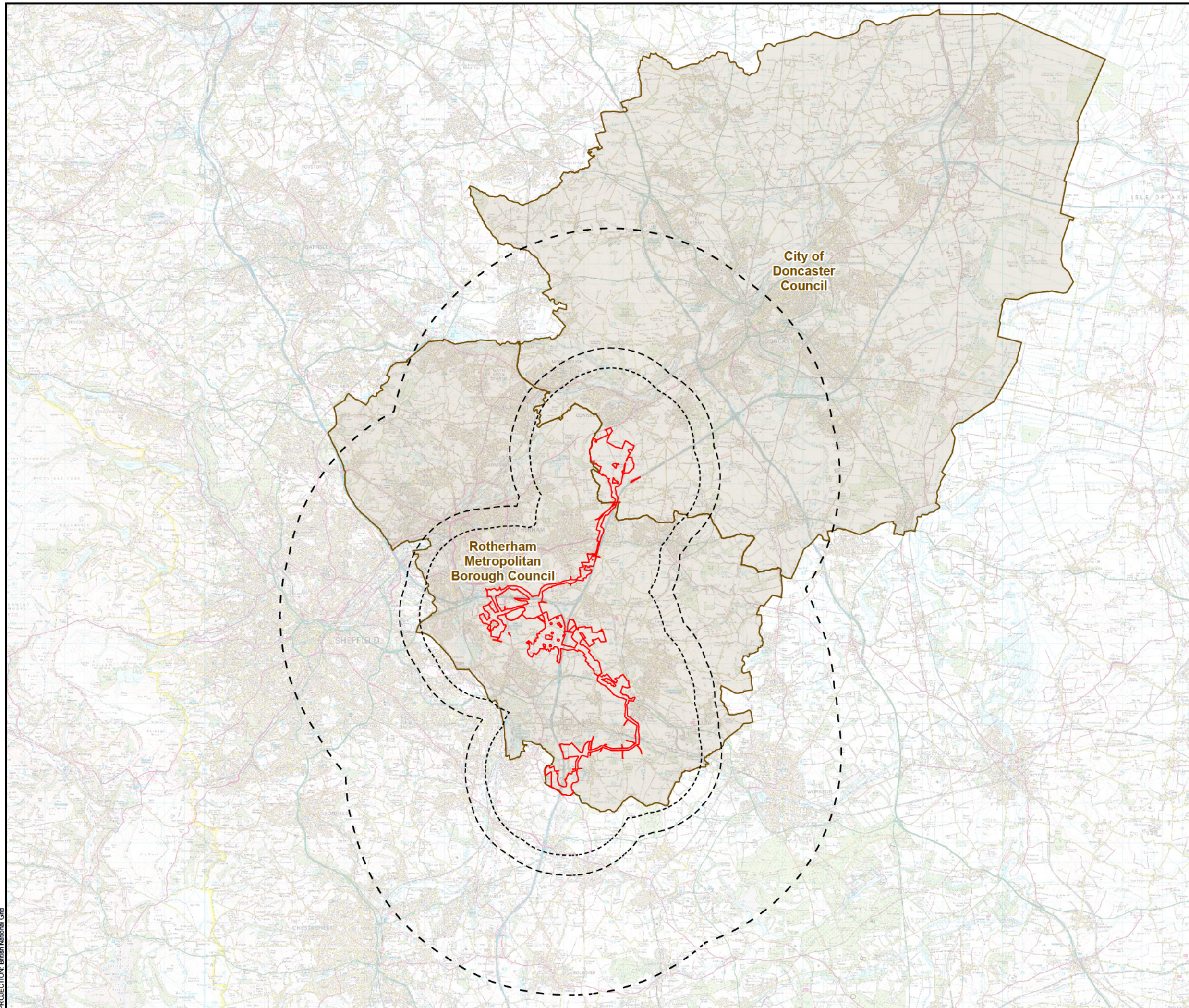
SCALE: 1:80,000	VERSION: A01
SIZE: A3	DRAWN: RW
APPLICATION: EN0110020	CHECKED: EB
DATE: 29/04/2026	APPROVED: AH

**Whitestone Solar Farm**  
 Environmental Statement Volume 3  
 Figure 17.2  
 Cumulative Effects Assessment - Zones of Influence within 1 km  
 Sheet 1 of 1

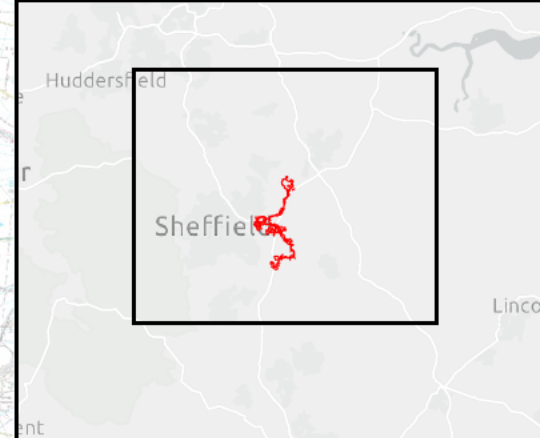
**Reference: EN0110020/APP/6.19**  
 Infrastructure Planning (Applications: Prescribed Forms and Procedure) Regulations 2009 - Regulations 5(2)(a)



PROJECTION: British National Grid



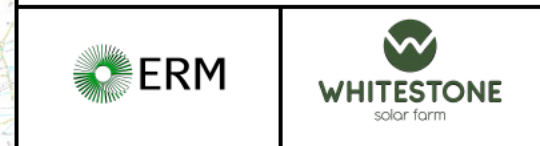
- Order Limits
- Zone of Influence
- 3 km - Cultural Heritage and Archaeology and Landscape and Visual
- 4 km - Noise and Vibration
- 10 km - Biodiversity
- Council Boundary - Socio Economics



SCALE: 1:182,000	VERSION: A01
SIZE: A3	DRAWN: RW
APPLICATION: EN0110020	CHECKED: EB
DATE: 30/04/2026	APPROVED: AH

**Whitestone Solar Farm**  
 Environmental Statement Volume 3  
 Figure 17.3  
 Cumulative Effects Assessment - Zones of Influence within 10 km  
 Sheet 1 of 1

**Reference: EN0110020/APP/6.19**  
 Infrastructure Planning (Applications: Prescribed Forms and Procedure) Regulations 2009 - Regulations 5(2)(a)



PROJECTION: British National Grid



**WHITESTONE**  
solar farm

## Contact

Whitestone Net Zero Ltd

[info@whitestonesolarfarm.co.uk](mailto:info@whitestonesolarfarm.co.uk)

0800 688 9936